



CITY OF BRIDGEPORT, CONNECTICUT

The City of Bridgeport, CT is now accepting submissions for the position of

FLEET MECHANIC

Salary: \$65,707.00 - \$70,078.00 per year. This position includes a comprehensive benefits package. This summary provides a brief overview of the benefits available to regular full-time municipal employees; depending on the employee group some of these benefits may include: retirement pension administered by CMERS (Connecticut Municipal Employees Retirement System), health insurance (medical, dental, vision, prescription), life, disability, paid leave, paid holidays, 457(b) deferred compensation plan (employee paid), and other voluntary employee paid benefits.

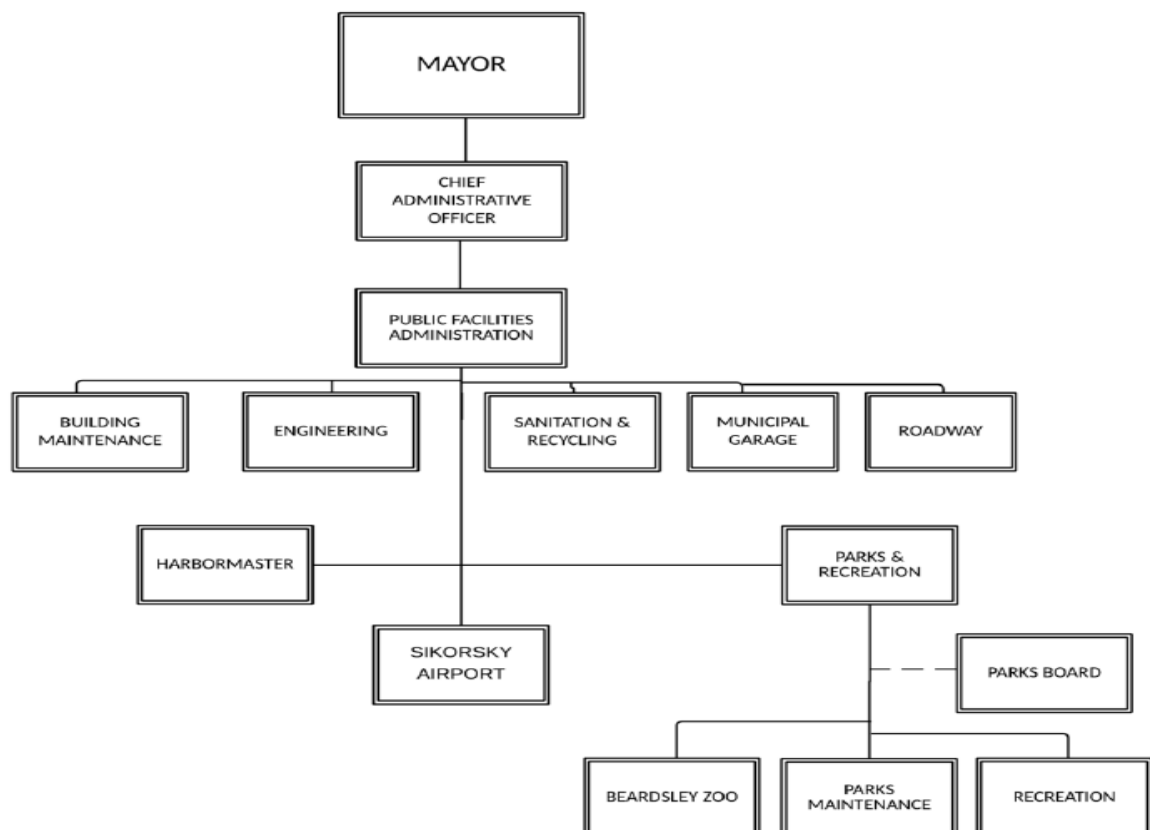
To Apply: Please mail, deliver or email a resume, supplied application, and copies of all required licenses/certifications to the Civil Service Commission office, 45 Lyon Terrace, room 106, Bridgeport, CT 06604. Required documents can be emailed to COB.Jobs@bridgeportct.gov.

Deadline to apply to be determined. (Any/all changes to this deadline shall be at the discretion of the City of Bridgeport).

Municipal Profile

The City of Bridgeport is located in Fairfield County at the mouth of the Pequonnock River on Long Island Sound. It is bordered by the towns of Trumbull to the north, Fairfield to the west, and Stratford to the east; with an approximate population of 147,000, 50,367 households, and a population density of 9,226 residents per square mile. The City has a Mayor-City Council form of government. The City's Mayor is the chief executive officer of the City and serves four-year term(s). The City Council, which acts as the City's legislative body, consists of twenty (20) members elected for two-year terms.

Public Facilities Administration



- Level 3: Master ASE Certification in Auto/Lt. Truck and 4 ASE Med/Heavy Truck and/or
Three (3) years satisfactory municipal mechanic experience at managerial discretion, with completion of employee competency evaluation form.
- Level 4: Master ASE Certification in Auto/Lt. Truck and Master ASE in Med/Heavy Truck and/or
Four (4) years satisfactory municipal mechanic experience at managerial discretion, with completion of employee competency evaluation form.

*All hires are required to have a Class B CDL along with a certification in Med/Heavy truck brakes and a minimum of one additional ASE in Auto/LT or Med/Heavy Duty truck. When hired the Mechanic must have a total of 4 ASE before the end of their 6-month probationary period.

c. Additional requirements applicable to Fleet Mechanics located in the Police Department:

- a valid motorcycle license and motorcycle repair experience for diagnosis, repairs and test drives;
- a valid CT gun license for handling police firearms in a safe and proper manner;
- watercraft certificate and marine service knowledge for diagnosis, repairs and test drives;
- experience with emergency equipment installations and repairs for police and/or other public safety vehicles.

PHYSICAL DEMANDS AND WORK ENVIRONMENT

The physical demands and work environment characteristics described here are representative of those that must be met by an employee to successfully perform the essential functions of this job. Reasonable accommodations which do not cause undue hardship may be made to enable individuals with disabilities to perform the essential functions.

- While performing the duties of this job, the employee is frequently required to walk, sit, stand, twist, bend, talk, and hear. Ability to lift and carry objects in excess 75 pounds. Sufficient stamina and good health to perform sometimes strenuous physical labor.
- The employee is occasionally required to use hands to finger, handle, feel or operate objects, tools or controls; and reach with hands and arms. The employee is occasionally required to climb or balance; stoop, kneel, crouch or crawl. Specific vision abilities required by this job include close vision, distance vision, color vision, peripheral vision, depth perception and the ability to adjust focus.
- While performing the duties of this job, the employee occasionally works near moving mechanical parts or in outside weather conditions. Ability to work in poor weather conditions such as cold, heat, rain and snow. The employee is occasionally exposed to wet and/or humid conditions, fumes, toxic or caustic chemicals or airborne particles, risk of electrical shock, and vibration.

This job description is not, nor is it intended to be, a complete statement of all duties, functions, responsibilities, qualifications, physical, and cognitive which comprise this position. The above is intended to be a fair representation of the "typical" demands of the position.

An Equal Opportunity Employer MF/AA/DIS

For further information and contact:

CIVIL SERVICE COMMISSION OFFICE
45 LYON TERRACE, ROOM# 104
BRIDGEPORT, CT 06604